



# 2011 WOMEN'S



# SOCCER



## GENERAL FACTS:

Institution: Spring Hill College  
City/State/Zip: Mobile, AL 36608  
Founded: 1830  
Enrollment: 1,504  
Nickname: Badgers  
School Colors: Purple, white  
Home Facility: Library Field  
Capacity: 500  
Affiliation: NAIA  
Conference: Southern States Athletic  
Division: West  
President: Rev. Richard P. Salmi, S.J.  
Athletic Director: Jim Hall  
Alma Mater: Grinnell College, 1995  
Faculty Athletic Representative: David Dean, Ph.D.  
Athletic Department Phone: 251-380-3485  
Athletic Department Fax: 251-460-2196  
Sports Information Director: Jim Stennett  
Alma Mater: Mississippi State, 1990  
SID Phone: 251-380-4468  
SID Email: [jstennett@shc.edu](mailto:jstennett@shc.edu)  
Athletic Web Site: [www.shcbadgers.com](http://www.shcbadgers.com)  
Twitter: SHCBADGERS  
Facebook: SHCAthletics

## COACHING STAFF:

Head Coach: Christian DeVries  
Alma Mater: Adams State, 1991  
Record at school: 6-11-0 (2nd season)  
Career record (women/men): 148-138-16 (16th season)  
Office Phone: 251-380-4475  
Best time/day to reach coach: 10 a.m.  
Assistant Coach: Dana Veth (2nd season)  
Athletic Trainer: Jake Jefcoat, ATC  
Trainer's Phone: 251-380-3493

## TEAM INFORMATION:

Overall Record Last Year: 6-11-0  
Conference/Finish: 2-3-0 (6th SSAC West)  
Starters returning/lost: 5/6

## SPRING HILL COLLEGE

Mobile, Alabama

Spring Hill College is ranked once again in the top 20 Southern universities and colleges, according to the 2012 edition of U.S. News & World Report's "America's Best Colleges."

Spring Hill is ranked 17th among the Southern colleges and universities offering a full range of undergraduate majors and master's programs. The U.S. News rankings are based on several quality measures including academic reputation, graduation and retention rates, faculty resources, student selectivity, peer assessment and graduation rate performance. Colleges and universities are listed in various categories depending on their size, location and other factors.

The college is ranked 10th among only 15 schools listed in the South's "Great Schools, Great Prices" category, colleges that offer quality academic programs, affordable tuition and significant financial aid.

Spring Hill College is also listed in the region's "A-Plus Schools for B Students" category, campuses where B students thrive in an engaged student body.

Forbes Magazine also ranks Spring Hill among its "America's Best Colleges" with SHC ranked No. 32 in the nation among similar institutions.

Forbes also ranks Spring Hill among the "Best Colleges in the South" and among the top 25 percent of the "Best Private Colleges" nationwide according to Forbes.

### ON THE COVER:

Senior Class of 2012

### PHOTOS BY:

Seth Laubinger



# HEAD COACH



## CHRISTIAN DEVRIES

begins his second season as the head coach of the SHC women's soccer team in 2011 after a highly successful 12-year career at the University of Minnesota-Morris (UMM).

Over his last four seasons with the NCAA Division III Cougars, DeVries' men's team

compiled an overall record of 52-23-7 along with two conference tournament titles in 2007 and 2008 and the regular season crown in 2009.

Prior to taking over the men's program, DeVries coached the Cougar women's program for eight years. Before joining the UMM staff, DeVries served as the head women's soccer coach at Missouri Valley College in Marshall, Mo., during the 1994 and 1995 seasons.

Including a 6-11 first season at SHC, DeVries has compiled an overall men's and women's record of 148-138-16 and a postseason record of 14-6-1. He has coached 64 All-Conference selections, 68 conference Scholar Athletes and 20 regional and national Scholar Athletes and two All American/All Region Athletes.

DeVries earned dual bachelor's degrees in Business Administration and Industrial Technology in 1991 and a master's in Guidance & Counseling in 1993 at Adams State College.

DeVries and his wife, Debra, have three children, Mikaela, Brynn, and Macen.

# ASSISTANT COACH



DANA VETH is in his second year as the assistant women's soccer coach at Spring Hill College following a successful three-year playing career at the University of Minnesota Morris.

In his playing time at UMM, Veth won two UMAC All-Conference awards and was once named to the

UMAC All-Tournament squad.

In 2011, Veth began a quest for Olympic gold when he was named to the captaincy of the Bahamas national soccer team.

Veth first earned international experience as a member of the Bahamas CAPS national team where he led his team to 2nd round qualifications in both the CAPS World Cup and the U-23 Olympic Qualifier in 2008. In 2007, Veth coached at the Bahama Football Association (BFA) National Academy and has also coached at soccer camp of Blaine High School in Minnesota.

Veth holds a BS in Sports Management from UMM.

# PREVIEW 2011

Spring Hill College Women's Soccer Head Coach Christian DeVries begins his second year on the Hill with a young team. The Badgers return only six seniors on a 22-woman roster with the remaining 16 players consisting of five sophomores and 11 freshmen. "Because of how much playing time the sophomores received last year, we're actually a mixture of young and old players," he says. "But we are mostly a young team." Even so, DeVries sees this year's team as being faster and more technically sound than his first SHC edition.

DeVries points to his improved defense as support of his optimism. "Our improved defense is going to allow our offense to convert to a more attacking style," he says. "We have two veteran players in senior Lorie Pendergast from St. Louis, Mo., and Molly Cowley of Jefferson City, Mo., taking charge of the defense." Cowley, a sophomore, played more minutes than any other Badger in 2010 and has earned her coach's title of 'veteran' player at a young age. This year she moves from her outside spot to the critical center defense position.

Also on defense, sophomore Erin Murphy of O'Fallon, Mo., along with freshmen Tatiana Gonzalez of Ocean Springs, Miss., and Haley Funderburg of Pell City, Ala., brings increased speed and technical ability to the Spring Hill ramparts. DeVries says, "One thing that is strikingly different with this team over the past is our depth. Even with the normal bumps and bruises of the preseason workouts, we've been able to remain a cohesive unit on the field."

The Badgers will be young at the goalkeeper position as sophomore Cassandra Amore of Pace, Fla., and freshman Abby Massengale from New Orleans, La., battle for the starting job. "Our defense will be good enough this year that I'm not too worried about young keepers stepping in," says DeVries. "They won't have to be superstars simply because they won't face the pressure that they would have in past years. As long as they keep things basic, they should have time to grow and learn."

Spring Hill will use its greater speed and quickness to create a more attacking style of offense. "We will have many more options this year," DeVries says. "Senior forward Elaine Femmer of St. Louis has moved to the outside while fellow senior Amber O'Connor of Ham Lake, Minn., has shifted up top. Megan Fox of Niceville, Fla., is a fast player and Erin Claxton from Calgary, Alberta, Canada, is a tremendous technical player. Those two freshmen will make a real difference in our ability run our style of offense."

Spring Hill will still be looking to get stronger in the midfield this year, but DeVries is confident and sees his team learning to control the ball and the time of possession. "The 'St. Louis Super Sisters' of senior Abby and freshman Madeline Galen are playing well together," he says. "Madeline has really stepped up her play and conditioning while Abby is a 4-year starter, so that relationship has been fun to watch. Our system of play is going to be different this year, but our style of play will be the same. We'll possess the ball and move it around while getting the ball into the attacking third more often."

The 2011 schedule offers the young Badgers little respite as DeVries readies his team for the grueling schedule of Southern States Athletic Conference (SSAC) play. "The SSAC has four teams rated in the NAIA Preseason Top 25 including three in the Top 15," he says. "Our non-conference schedule is purposely designed to get us ready for that challenge. We'll face NCAA Division I member Nicholls State, traditional Division 2 powerhouse West Florida and a very good Lyon College team to let our players get accustomed to that level of play."

The SSAC coaches picked the Badgers to finish in seventh place this season and DeVries is comfortable with that prediction. "That's probably about right and about where we thought we'd be at this stage of the program's development," he says. "But we are definitely capable of finishing higher than that. Also, this year the conference has moved away from a divisional format, so that means one loss doesn't ruin your season and knock you out of playoff contention."

Overall, DeVries is happy with what he has seen from his young Badger team as the season approaches. "By the end of last season, the team finally started to understand where this program is going and how we need to get there. So far this year, they are making even more connections and they are very excited about starting the new year."



0  
Cassandra Amore  
GK  
Sophomore • 5-5



1  
Abby Massengale  
GK  
Freshman • 5-7



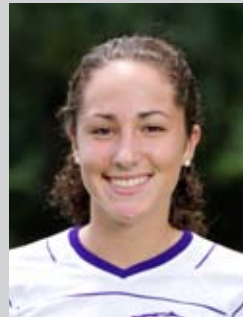
2  
Abby Galen  
MF/FWD  
Senior • 5-4



3  
Lindsay Aleman  
DEF/MF  
Sophomore • 5-2



4  
Lorie Pendergast  
DEF  
Senior • 5-2



5  
Carolina Tejera  
DEF/MF  
Freshman • 5-5



14  
Theresa Carr  
DEF  
Freshman • 5-6



15  
Christy Pendergast  
DEF  
Freshman • 5-4



16  
Rachel Nance  
MF  
Senior • 5-6



17  
Madeline Galen  
MF  
Freshman • 5-3



18  
Emily Thorpe  
FWD  
Freshman • 5-9



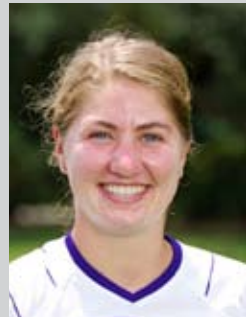
19  
Alexandra Suess  
MF  
Sophomore • 5-4

## 2010 RESULTS

DATE	OPPONENT	SITE	RESULT
Aug. 23	University of Mobile [14]	Library Field	L; 0-1 (2 ot)
Aug. 29	at Truett-McConnell College	Cleveland, Ga.	L; 1-2
Aug. 30	at SCAD Savannah [RV]	Savannah, Ga.	L; 1-5
Sept. 7	at Alabama State University	Montgomery, Ala.	W; 6-1
Sept. 11	Southern Wesleyan University	Library Field	W; 2-1
Sept. 15	at Delta State University	Cleveland, Miss.	W; 2-1
Sept. 22	University of West Florida	Library Field	L; 1-7
Sept. 25	at Mississippi College	Clinton, Miss.	L; 2-3
Sept. 30	at Thomas University (Ga.)	Thomasville, Ga.	L; 2-3
Oct. 3	Shorter University	Library Field	L; 1-2
Oct. 8	at University of North Alabama	Florence, Ala.	L; 0-6
Oct. 9	at Trevecca Nazarene University	Nashville, Tenn.	W; 3-2
Oct. 12	*Auburn University Montgomery [24]	Library Field	L; 1-4
Oct. 16	*Belhaven University	Library Field	W; 4-0
Oct. 19	*at Faulkner University [RV]	Montgomery, Ala.	L; 1-3
Oct. 26	*at William Carey University [11]	Hattiesburg, Miss.	W; 1-0 (ot)
Oct. 30	*University of Mobile [14]	Library Field	L; 0-1

\* - SSAC West match

[ ] - Final 2010 NAIA Rating



8  
Haley Funderburg  
DEF  
Freshman • 5-5

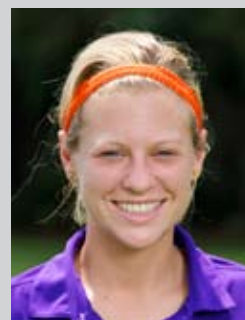
9  
Erin Claxton  
MF  
Freshman • 5-6

10  
Elaine Femmer  
MF/FWD  
Senior • 5-5

11  
Erin Brennan  
MF  
Freshman • 5-6

12  
Tatiana Gonzalez  
DEF  
Freshman • 5-4

13  
Erin Murphy  
DEF/MF  
Sophomore • 5-1



20  
Megan Fox  
FWD  
Freshman • 5-5

24  
Amber O'Connor  
FWD  
Senior • 5-7

25  
Molly Cowley  
DEF  
Sophomore • 5-6

STUDENT  
MANAGER  
Annie Kinler

STUDENT  
ASSISTANT  
Lara Menke

# 2011 ROSTER

NO.	PLAYER	CLASS	POS.	HT.	HOMETOWN/PREVIOUS SCHOOL(S)
0	CASSANDRA AMORE	SO.	GK	5-5	PACE, FLA./PACE HIGH
1	ABBY MASSENGALE	FR.	GK	5-7	NEW ORLEANS, LA./MT. CARMEL ACADEMY
2	ABBY GALEN	SR.	MF/FWD	5-4	ST. LOUIS, MO./COR JESU ACADEMY
3	LINDSAY ALEMAN	SO.	DEF/MF	5-2	COVINGTON, LA./FONTAINEBLEAU HIGH
4	LORIE PENDERGAST	SR.	DEF	5-2	ST. LOUIS, MO./COR JESU ACADEMY
5	CAROLINA TEJERA	FR.	DEF/MF	5-5	FT. MYERS, FLA./BISHOP VEROT HIGH
6	KATIE PENDERGAST	SR.	MF/FWD	5-2	ST. LOUIS, MO./COR JESU ACADEMY
8	HALEY FUNDERBURG	FR.	DEF	5-5	PELL CITY, ALA./PELL CITY HIGH
9	ERIN CLAXTON	FR.	MF	5-6	CALGARY, ALBERTA, CANADA/LORD BEAVERBROOK HIGH
10	ELAINE FEMMER	SR.	MF/FWD	5-5	ST. LOUIS, MO./URSULINE ACADEMY
11	ERIN BRENNAN	FR.	MF	5-6	ST. LOUIS, MO./JOHN F. KENNEDY CATHOLIC HIGH
12	TATIANA GONZALEZ	FR.	DEF	5-4	OCEAN SPRINGS, MISS./OCEAN SPRINGS HIGH
13	ERIN MURPHY	SO.	DEF/MF	5-1	O'FALLON, MO./INCARNATE WORD ACADEMY
14	THERESA CARR	FR.	DEF	5-6	ST. LOUIS, MO./ROSATI-KAIN HIGH
15	CHRISTY PENDERGAST	FR.	DEF	5-4	ST. LOUIS, MO./COR JESU ACADEMY
16	RACHEL NANCE	SR.	MF	5-6	ST. LOUIS, MO./VILLA DUCHESNE
17	MADLINE GALEN	FR.	MF	5-3	ST. LOUIS, MO./COR JESU ACADEMY
18	EMILY THORPE	FR.	FWD	5-9	SHAWNEE MISSION, KAN./BISHOP MIEGE HIGH
19	ALEXANDRA SUESS	SO.	MF	5-4	ST. LOUIS, MO./INCARNATE WORD ACADEMY
20	MEGAN FOX	FR.	FWD	5-5	NICEVILLE, FLA./NICEVILLE SENIOR HIGH
24	AMBER O'CONNOR	SR.	FWD	5-7	HAM LAKE, MINN./BLAINE HIGH/UNIV. OF MINN. MORRIS
25	MOLLY COWLEY	SO.	DEF	5-6	JEFFERSON CITY, MO./JEFFERSON CITY HIGH

# 2011 SPRING HILL COLLEGE WOMEN'S SOCCER



## 2011 SCHEDULE

DATE	OPPONENT	SITE	TIME
AUG. 19	AT NICHOLLS STATE UNIVERSITY	THIBODAUX, LA.	12 P.M.
AUG. 27	TEXAS COLLEGE	LIBRARY FIELD	11 A.M.
AUG. 28	LYON COLLEGE	LIBRARY FIELD	3:30 P.M.
SEPT. 3	AT LOUISIANA COLLEGE	PINEVILLE, LA.	1 P.M.
SEPT. 9	DELTA STATE UNIVERSITY	LIBRARY FIELD	2 P.M.
SEPT. 14	AT UNIVERSITY OF WEST FLORIDA	PENSACOLA, FLA.	5 P.M.
SEPT. 17	*AT BRENAU UNIVERSITY	GAINESVILLES, GA.	6 P.M.
SEPT. 23	*LEE UNIVERSITY (LIVE ON SSACSPORTS.COM)	LIBRARY FIELD	2 P.M.
SEPT. 24	*SHORTER UNIVERSITY (LIVE ON SSACSPORTS.COM)	LIBRARY FIELD	2 P.M.
SEPT. 30	*AT TRUETT-MCCONNELL COLLEGE	CLEVELAND, GA.	12 P.M.
OCT. 1	*AT SOUTHERN WESLEYAN UNIVERSITY	CENTRAL, S.C.	4 P.M.
OCT. 7	*BREWTON-PARKER COLLEGE	LIBRARY FIELD	2 P.M.
OCT. 8	*EMMANUEL COLLEGE	LIBRARY FIELD	2 P.M.
OCT. 11	*AT AUBURN UNIVERSITY MONTGOMERY	MONTGOMERY, ALA.	1 P.M.
OCT. 15	*AT BELHAVEN UNIVERSITY	JACKSON, MISS.	5 P.M.
OCT. 18	*FAULKNER UNIVERSITY	LIBRARY FIELD	1 P.M.
OCT. 25	*WILLIAM CAREY UNIVERSITY	LIBRARY FIELD	1 P.M.
OCT. 29	*AT UNIVERSITY OF MOBILE	UNIV. OF MOBILE	5 P.M.

\* - SSAC MATCH

## 2010 SSAC WEST FINAL STANDINGS

## 2010 SSAC EAST FINAL STANDINGS

Team	SSAC	Overall
* Mobile	4-1-0	13-7-1
William Carey	3-1-1	14-4-4
AUM	3-2-0	12-6-1
Faulkner	2-2-1	13-5-1
<b>Spring Hill</b>	<b>2-3-0</b>	<b>6-11-0</b>
Belhaven	0-5-0	1-13-1

Team	SSAC	Overall
~ Lee	7-0-0	22-2-1
Shorter	6-1-0	10-8-1
Truett-McConnell	4-3-0	10-10
So. Wesleyan	3-3-1	8-8-2
Emmanuel	3-3-1	7-9-2
Brenau	2-5-0	4-11-1
Brewton-Parker	2-5-0	3-14-0
Columbia	0-7-0	7-11-0

\* - Division Champion

~ - Division / SSAC Tournament / NAIA National Champion